

deliVerea

Product feature

# Address Validation

# Address Validation

Address validation allows for setting up a **validation system prior** to documenting the shipment for the carrier. Additionally, if the data provided by the customer are correct, it makes it possible to geolocate the delivery and subsequently validate it at the right location.

Besides, carriers involved in **Same Day** services require geolocation to work in a timely manner for delivery. Address validation provides it quickly and easily.



There is no standard system for identifying potential errors as a step prior to documentation for the carrier. This leads to **documentation errors that cause delays in delivery or manual tasks for adequate documentation.**



Slow down your operations



Reduced customer satisfaction



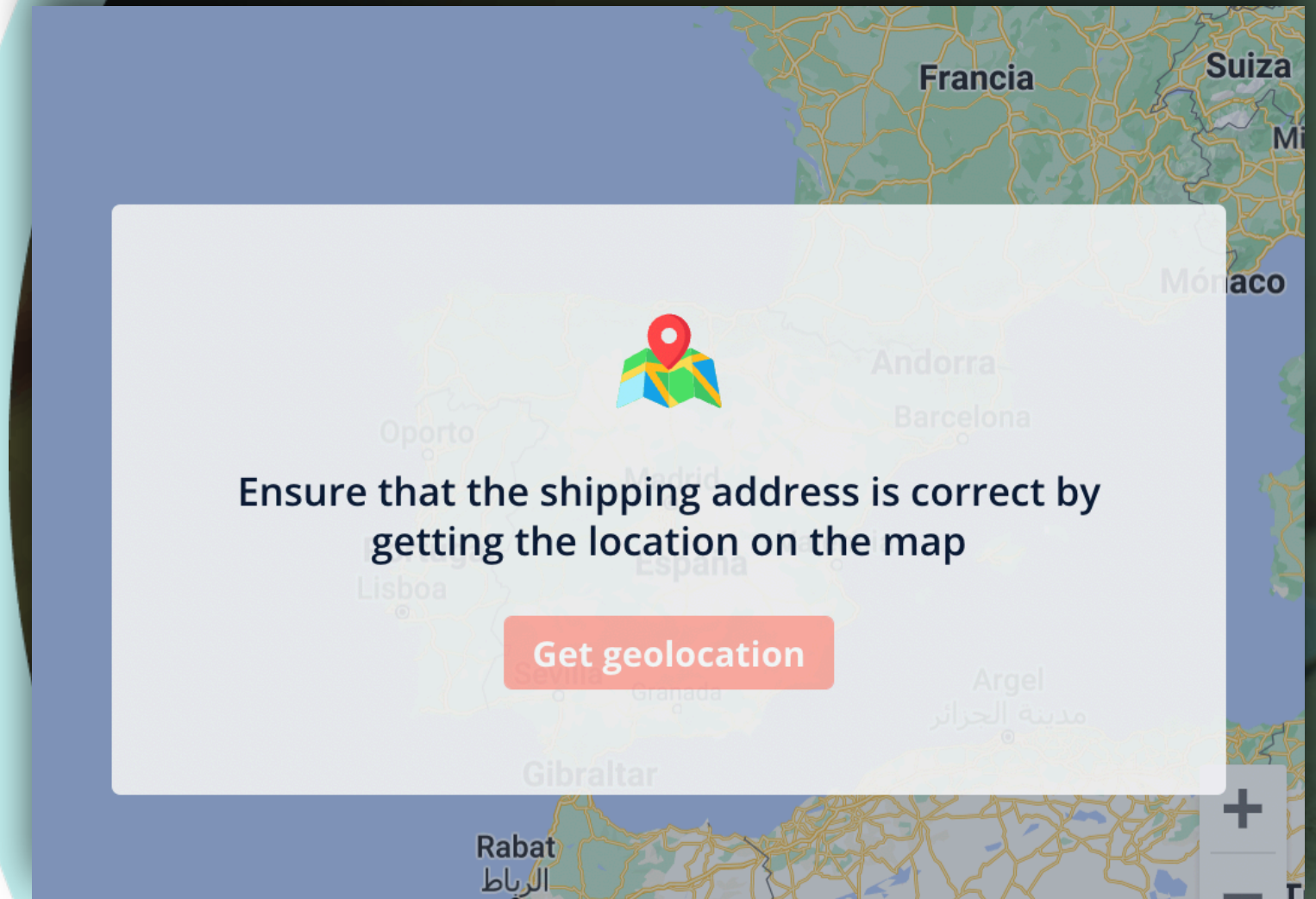
CS department overload



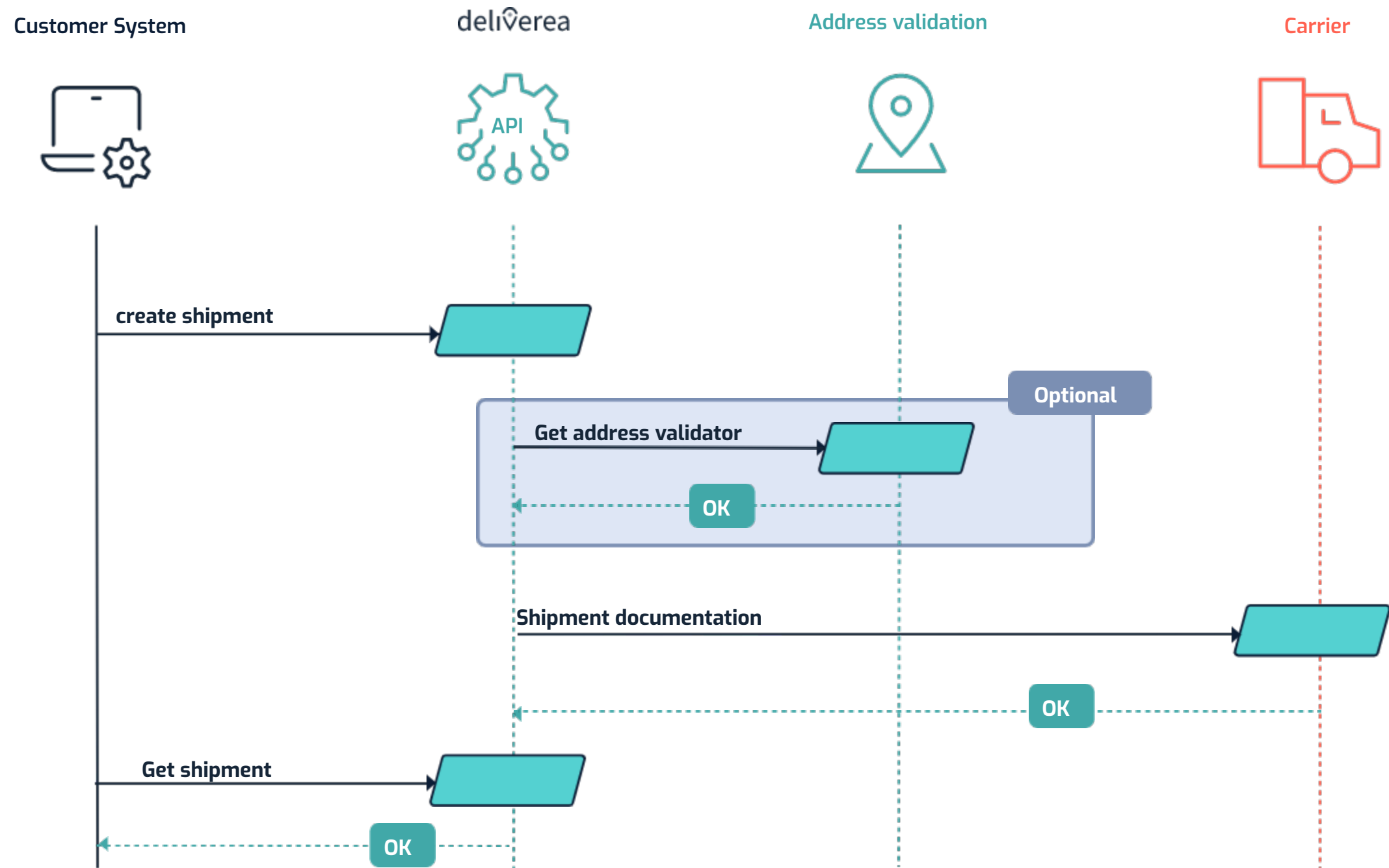
Delivery address errors

Deliverea has developed **Address Validation**, which makes it possible to:

- Obtain **delivery address geolocation**.
- **Display** the delivery point on a map.
- **Validate** if the data provided by the customer are correct.



# Technical flow





### Customers with a lax validation system

It increases errors when providing an address so it is recommended to use Address validation proactively to minimize the impact on delivery.



### Customers who sell a high-value product

Depending on the carrier, it is possible to validate that the delivery was made at the previously geolocated place by means of address validation, becoming an additional proof to the POD.



### Customers with SD operations

Customers who, for operational reasons, must obtain the coordinates of the shipments they manage and validate them on a map.

Contact us

deliv<sup>er</sup>erea

# Product Department



[See our Roadmap](#)



[Make suggestions](#)



[sales@deliverea.com](mailto:sales@deliverea.com)